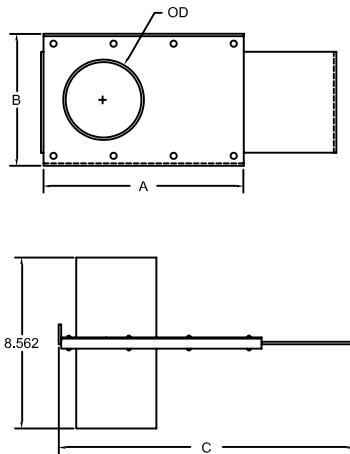


Shut Offs

Standard Features

- Unsealed shut off for gravity feed lines of pellets
- Aluminum, Carbon Steel or Stainless Steel construction
- Sizes 1.5" to 8" OD
- Hand or air cylinder actuated
- Intermediate sizes are available

OD	A	B	C
1.5"	5.00	4.00	7.00
2"	6.25	4.63	9.13
2.5"	8.00	5.50	11.25
3"	8.00	5.50	11.50
3.5"	10.00	6.63	14.75
4"	10.00	6.63	14.75
4.5"	11.00	7.13	16.25
5"	12.00	7.88	17.75
6"	14.00	9.88	20.50
8"	18.00	11.88	27.00



Camlocks

ALUMINUM CAMLOCKS, SIZES & PART NUMBERS, STAINLESS STEEL AVAILABLE

PART	1.5"	2"	2.5"	3"	4"	5"	6"
Part "A"	CL15A	CL2A	CL25A	CL3A	CL4A	CL5A	CL6A
Part "B"	CL15B	CL2B	CL25B	CL3B	CL4B	CL5B	CL6B
Part "C"	CL15C	CL2C	CL25C	CL3C	CL4C	CL5C	CL6C
Part "D"	CL15D	CL2D	CL25D	CL3D	CL4D	CL5D	CL6D
Part "E"	CL15E	CL2E	CL25E	CL3E	CL4E	CL5E	CL6E
Part "F"	CL15F	CL2F	CL25F	CL3F	CL4F	CL5F	CL6F
Part "DC"	CL15DC	CL2DC	CL25DC	CL3DC	CL4DC	CL5DC	CL6DC
Part "DP"	CL15DP	CL2DP	CL25DP	CL3DP	CL4DP	CL5DP	CL6DP



Male & female camlocks available with stub to couple with tubing sizes

TUBE STUB ADAPTERS

